



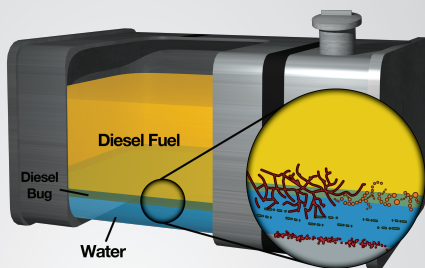
DIESEL INJECT-A-CLEAN & BIOCID

The Problem

When water/condensation contaminates diesel fuel, the water sits on the bottom of the tank, the layer formed between them creates an environment that promotes the growth of microorganisms commonly known as "diesel bug".

Diesel bug can enter the fuel lines, clog filters and restrict the supply of diesel. The diesel bug problem has increased since the introduction of higher fuel temperatures, especially in high pressure diesel fuel systems where heated fuel is returned to the fuel tank.

With the introduction of low sulphur fuels, diesel engine components are not receiving the same level of lubrication, making it harder for the engine to work efficiently and increasing wear and fatigue on moving parts.



Symptoms:

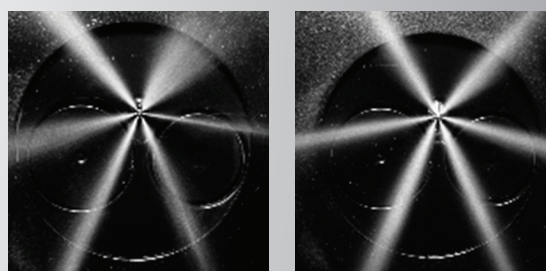
- Increased fuel consumption
- Higher exhaust emissions
- Loss of power
- Poor acceleration
- Hard starting
- Irregular idle
- EGR system failure warning
- Clogged fuel filter

The Solution

Wynn's® Professional Formula Diesel

Inject-A-Clean and Biocide for high pressure / common rail systems has been developed using the latest cleaning and lubricating technology while still being compatible with traditional diesel systems. As Wynn's® Diesel Inject-A-Clean mixes with the diesel and moves through the fuel system, detergents quickly and safely break down the deposits and the dispersants hold the now microscopic deposits in suspension and removes them via the combustion process. It cleans the injectors and contains a DCA (Deposit Control Additive) to help prevent the formation of new deposits.

The biocide is designed to kill all unwanted microorganisms and stop the exponential growth of the diesel bug. Wynn's® Diesel Inject-A-Clean cleans and protects high-pressure/common rail systems against excessive fouling, wear and water contamination damage.



Diesel fuel injector spray pattern before Wynn's treatment (left), and after (right).

Wynn's® Professional Formula Diesel Inject-A-Clean and Biocide

- Cleans injectors
- Restores & maintains ideal injector spray pattern
- Does not emulsify water & diesel fuel
- Improves acceleration
- Improves fuel economy
- Compensates for lack of lubricity in low sulphur fuels
- Reduces exhaust emissions
- Safe to use with oxygen sensors
- Safe to use with catalytic converters & particulate filters

Ask about our other **Wynn's®** Services

www.wynnspro.com.au



PROFESSIONAL
SERVICE PROGRAMS